



A1Up Polyclonal Antibody

Catalog No	YP-Ab-02447
Isotype	IgG
Reactivity	Human;Mouse
Applications	WB;IHC;IF;ELISA
Gene Name	UBQLN4
Protein Name	Ubiquilin-4
Immunogen	The antiserum was produced against synthesized peptide derived from human UBQLN4. AA range:201-250
Specificity	A1Up Polyclonal Antibody detects endogenous levels of A1Up protein.
Formulation	Liquid in PBS containing 50% glycerol, 0.5% BSA and 0.02% sodium azide.
Source	Polyclonal, Rabbit,IgG
Purification	The antibody was affinity-purified from rabbit antiserum by affinity-chromatography using epitope-specific immunogen.
Dilution	WB: 1/500 - 1/2000. IHC: 1/100 - 1/300. ELISA: 1/40000.. IF 1:50-200
Concentration	1 mg/ml
Purity	≥90%
Storage Stability	-20°C/1 year
Synonyms	UBQLN4; C1orf6; CIP75; UBIN; Ubiquilin-4; Ataxin-1 interacting ubiquitin-like protein; A1Up; Ataxin-1 ubiquitin-like-interacting protein A1U; Connexin43-interacting protein of 75 kDa; CIP75
Observed Band	54kD
Cell Pathway	Nucleus . Cytoplasm . Chromosome . Endoplasmic reticulum . Cytoplasm, perinuclear region . Cytoplasmic vesicle, autophagosome . Colocalizes with the proteasome, both in nucleus and cytoplasm (PubMed:15280365). Exported from the nucleus following interaction with DES1/POST (PubMed:29666234). In response to DNA damage and phosphorylation at Ser-318 by ATM, localizes to the nucleus and is recruited to sites of DNA damage (PubMed:30612738). .
Tissue Specificity	Highly expressed in pancreas, kidney, skeletal muscle, heart and throughout the brain, and at lower levels in placenta, lung and liver.
Function	PTM:Phosphorylated upon DNA damage, probably by ATM or ATR.,similarity:Contains 1 UBA domain.,similarity:Contains 1 ubiquitin-like domain.,subcellular location:May associate with the endoplasmic reticulum.,subunit:Homodimer. Binds SCA1. Binds signal sequences of proteins that are targeted to the endoplasmic reticulum.,tissue specificity:Highly expressed in pancreas, kidney, skeletal muscle, heart and throughout the brain, and at lower levels in placenta, lung and liver.,



Background

PTM:Phosphorylated upon DNA damage, probably by ATM or ATR.,similarity:Contains 1 UBA domain.,similarity:Contains 1 ubiquitin-like domain.,subcellular location:May associate with the endoplasmic reticulum.,subunit:Homodimer. Binds SCA1. Binds signal sequences of proteins that are targeted to the endoplasmic reticulum.,tissue specificity:Highly expressed in pancreas, kidney, skeletal muscle, heart and throughout the brain, and at lower levels in placenta, lung and liver.,

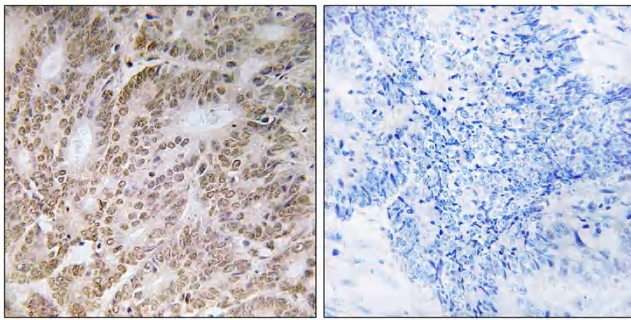
matters needing attention

Avoid repeated freezing and thawing!

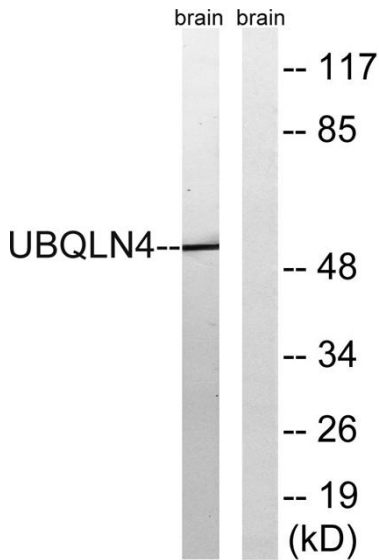
Usage suggestions

This product can be used in immunological reaction related experiments. For more information, please consult technical personnel.

Products Images



Immunohistochemistry analysis of paraffin-embedded human colon carcinoma tissue, using UBQLN4 Antibody. The picture on the right is blocked with the synthesized peptide.



Western blot analysis of lysates from mouse brain, using UBQLN4 Antibody. The lane on the right is blocked with the synthesized peptide.